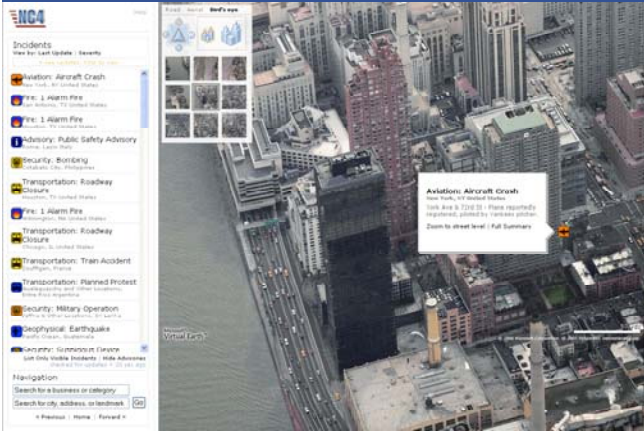




Incident Monitoring Center



Microsoft Virtual Earth 2006

ALERT SUMMARY: MANHATTAN PLANE CRASH

DATE
October 11th, 2006

TIME
2:42 pm EDT

LOCATION
524 E 72nd St
New York, NY

INCIDENT SITUATION

A small fixed-wing aircraft crashed into the 30th floor of a 42-story residential high rise on the Upper East Side of Manhattan on the afternoon of October 11th. Witnesses reported seeing the plane flying low and erratically before slamming into the building. Debris and the flaming wreckage of the plane rained down on the street below. The building was partially evacuated and streets were closed in the area. Two fatalities were found on the ground and eleven firefighters suffered minor injuries while battling the resulting 4-alarm high-rise fire.

The crash was later determined to be an accident and the FBI stated that there was no indication of terrorism. However, combat air patrols were dispatched across the country and a temporary flight restriction was instituted one mile around the site. It was found that the plane was registered and piloted by Cory Lidle, a pitcher for the New York Yankees. He and his flight instructor took off from Teterboro Airport on a sightseeing trip and crashed 12 minutes after takeoff.

NC4 COVERAGE

NC4 provides ongoing updates to members as the incident unfolds through the National Incident Monitoring Center (NIMC). NIMC analysts follow the incident using official government sources as well as national and international media sources. In following the story, we used media coverage such as the WNBC breaking news article "Plane Crash in Manhattan" and updates from the New York City Office of Emergency Management. The initial NC4 alert was disseminated within 2 minutes of receiving notification of the crash and within 10 minutes of the actual crash itself.

Selected NIMC Updates:

A small plane has crashed into a building. Injuries are unknown.
2006-10-11 14:52 EDT

Fire showing from high-rise building. NYC OEM confirmed incident.
2006-10-11 14:55 PDT

FAA confirming a small plane crashed in the middle of residential high-rise.
2006-10-11 14:04 EDT

Second alarm sounded for heavy fire on 2 floors. 524 E 72nd St evacuating.
2006-10-11 15:10 EDT

At least two fatalities reported.
2006-10-11 15:30 EDT

Combat air patrols being dispatched in several, unspecified cities.
2006-10-11 15:33 EDT

Temporary flight restriction within a one mile radius of the scene.
2006-10-11 15:39 EDT

According to FBI, no immediate indication of terrorism at this time.
2006-10-11 15:51 EDT

© 2006 NC4

The screenshot shows the NC4 web interface with the following details:

- Incident Channels:** NIMC Incidents, Alert Profiles-Create/Modify, Active Incidents, NIMC Incidents, NIMC Map with Refresh, NIMC in Google Earth, Virtual Earth (BETA 3)
- Special Events:** Avian Flu, 2006 World Cup
- NJ/NYCT Transportation:** Transportation Incidents, Transportation Alert Profiles
- User Profile Administration:** My Profiles
- Facility Management:** Create Facilities, Facility Status, Facility Map

Incident Detail:

- Event:** Aviation (Aircraft Crash)
- When:** 2006-10-11 11:50 PDT
- Where:** 524 E 72nd St, New York, NY 10021-8001, United States
- Synopsis:** York Ave & 72nd St- According to FBI, no immediate indication of terrorism at this time. A small fixed-wing aircraft has crashed into the 20th floor of a 50-story residential building on York Ave and 72nd St. Firefighters are making progress on the a 3 alarm fire on three floors of the residential building. There is also fire on the ground resulting from debris and a heavy fuel spill. Injuries are unknown at this time, but people are reportedly trapped inside. 524 East 72nd St has been evacuated. An FBI spokesperson stated that there is no immediate indication of terrorism at this [time](#).
- What:**
- Special Program Event:** N/A
- Last Updated:** 2006-10-11 12:51 PDT by NC4 Analyst 4
- Notification Rule:** Do Not Send
- Severity:** Severe, Multiple, Attachment(s)

Buttons: Forward, Comment, Cancel